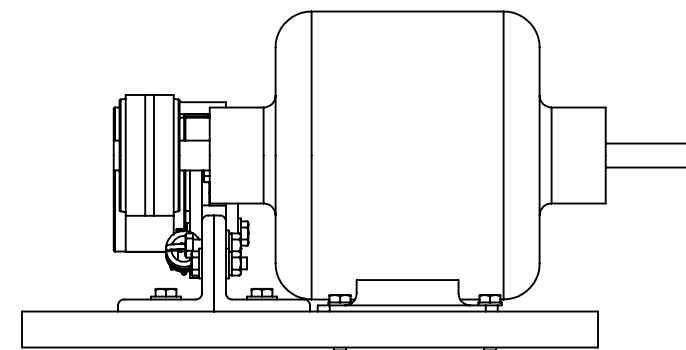
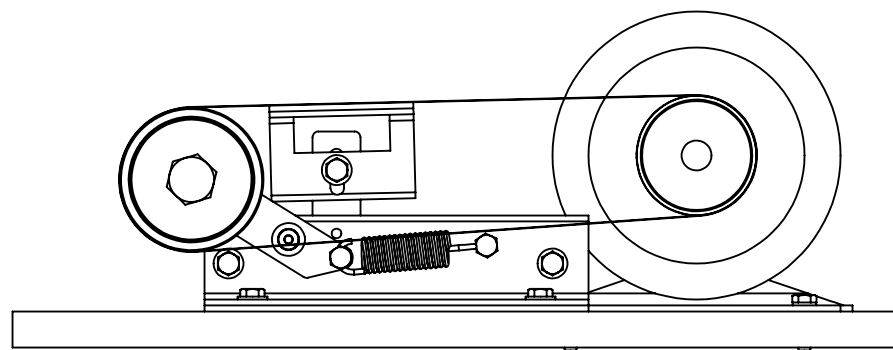
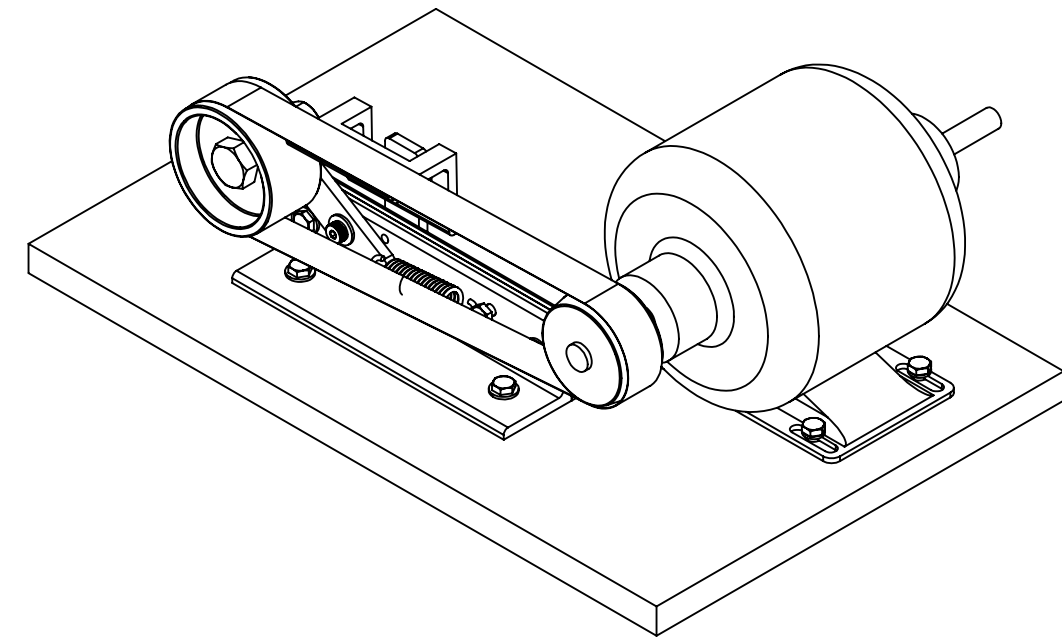
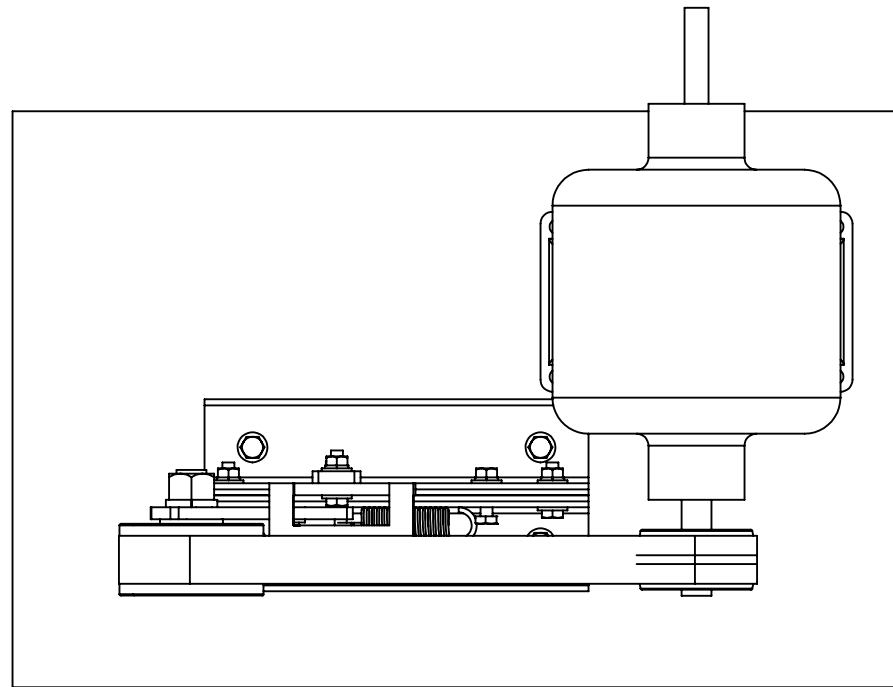


REVISIONS			
REV.	DESCRIPTION	DATE	APPROVED
-	INITIAL RELEASE	01-01-15	CJD



NOTES:
ALL DIMENSIONS APPLY AFTER ANY COATING

UNLESS SPECIFIED OTHERWISE DIMENSIONS ARE IN INCHES AND TOLERANCES ARE:		CAD GENERATED DRAWING, DO NOT MANUALLY UPDATE		TITLE	
FRACTIONS DECIMALS ANGLES ± 1/16 .XX±.01 ±1/2 deg .XXX±.005		APPROVALS DATE		BELT SHARPENER	
MATERIAL		DRAWN CJD	01-01-15	SIZE B	DOCUMENT NUMBER Belt Sharpener
FINISH AS FABRICATED		CHECKED		SCALE: 1:4	REV -
WEIGHT 214.066 LBS		APPROVED		SHEET 1 OF 3	

CJD



ITEM NO.	QTY	PART NUMBER	DESCRIPTION	REV	MATERIAL	VENDOR
1	1	Base Angle 1	BASE ANGLE 1	-	6061-T6 (SS)	
2	1	Base Angle 2	BASE ANGLE 2	-	6061-T6 (SS)	
3	1	Pivot Arm	PIVOT ARM	-	6061-T6 (SS)	
4	1	Platen Riser	PLATEN RISER	-	6061-T6 (SS)	
5	1	Platen	PLATEN	-	6061-T6 (SS)	
6	12		FW 1/4 SAE		STAINLESS STEEL	
7	1		FW 5/8 SAE		STAINLESS STEEL	
8	12		HHCS 1/4-20 UNC x 1		STAINLESS STEEL	
9	1		HHCS 1/4-20 UNC x 3/4		STAINLESS STEEL	
10	1		HHCS 1/4-20 UNC x 1/2		STAINLESS STEEL	
11	1		HHCS 5/8-11 UNC x 2		STAINLESS STEEL	
12	8		LW 1/4		STAINLESSS STEEL	
13	1		LW 5/8		STAINLESSS STEEL	
14	4		NUT 1/4-20		STAINLESS STEEL	
15	1		NUT 5/8-11		STAINLESS STEEL	
16	1	419-612	IDLER PULLEY		PLAIN CARBON STEEL	DORMAN
17	1	Base	BASE PLATE	-	PINE	
18	1	Electric Motor	ELECTRIC MOTOR		CAST ALLOY STEEL	
19	1	Drive Wheel	DRIVE WHEEL	-	OAK	
20	1	Belt				
21	1	9628K58	EXTENSION SPRING 2 5/8" LONG, 3/4" DIAMETER, .1 WIRE DIAMETER			MCMASTER-CARR
22	8	90975A053	1/4"-20 T-NUT			MCMASTER-CARR
23	1		FW 5/16 SAE		STAINLESS STEEL	
24	1	91259A175	SHOULDER SCREW 5/16" DIAMETER X 5 /16" LONG, 1/4-20 THREAD	-	PLAIN CARBON STEEL	MCMASTER-CARR

NOTES:

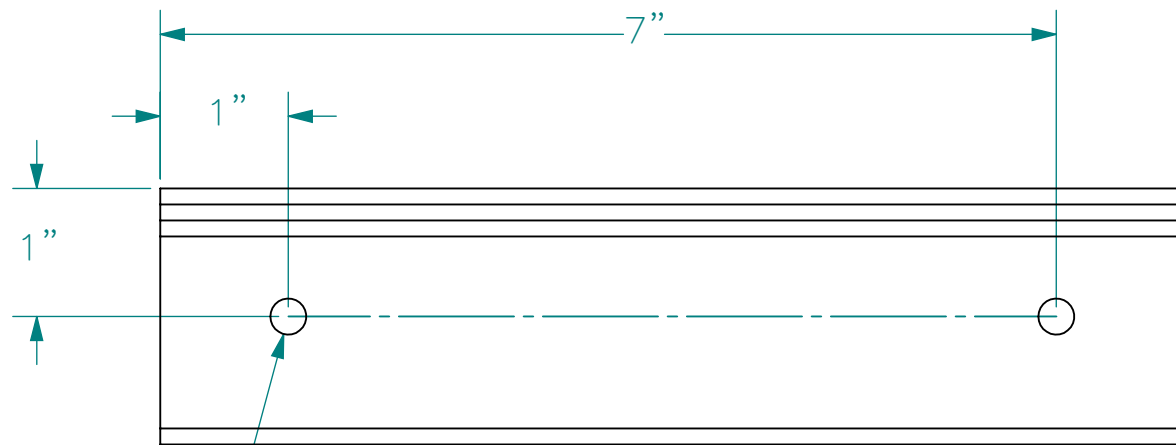
ALL DIMENSIONS APPLY AFTER ANY COATING

UNLESS SPECIFIED OTHERWISE DIMENSIONS ARE IN INCHES AND TOLERANCES ARE:		CAD GENERATED DRAWING, DO NOT MANUALLY UPDATE		TITLE	
FRACTIONS DECIMALS ANGLES ± 1/16 .XX±.01 ±1/2 deg .XXX±.005		APPROVALS DATE			
MATERIAL		DRAWN	01-01-15		
FINISH		CHECKED			
WEIGHT LBS		APPROVED	SIZE B DOCUMENT NUMBER Belt Sharpener		
		CAGE CODE: ORAP1		SCALE: 1:4	REV -
				SHEET 2 OF 3	

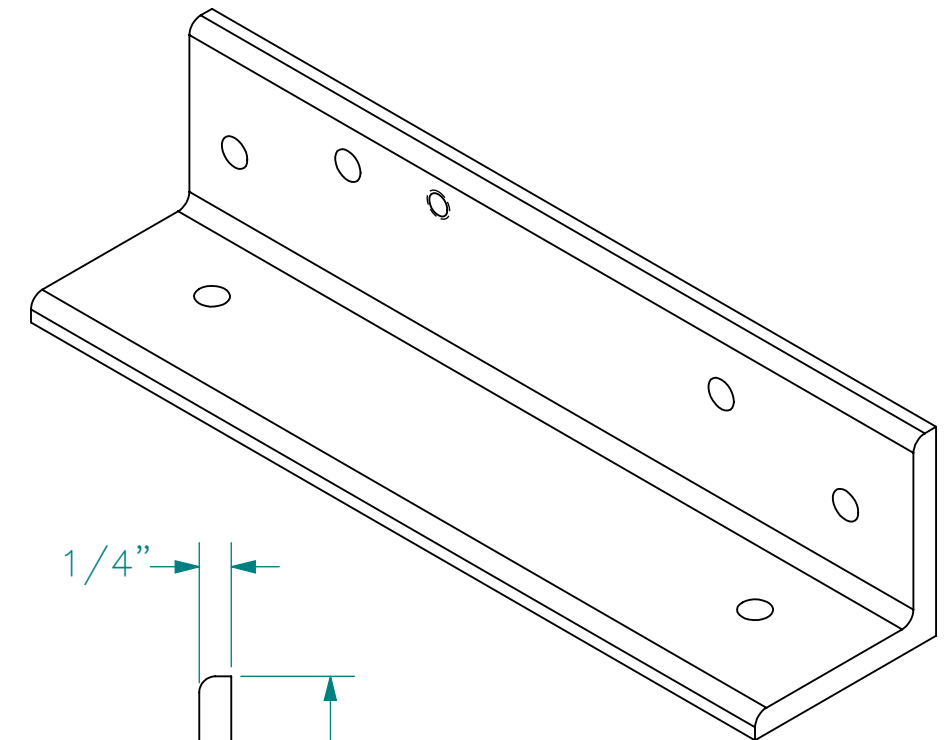
CJD



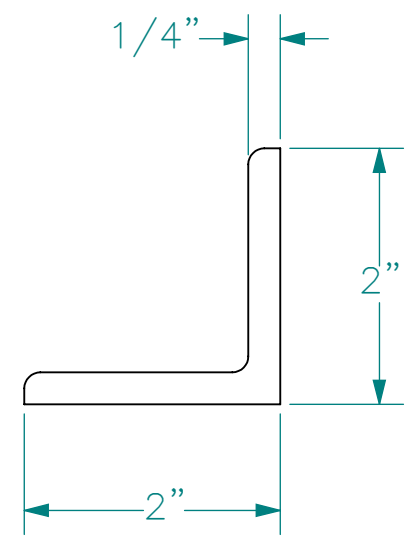
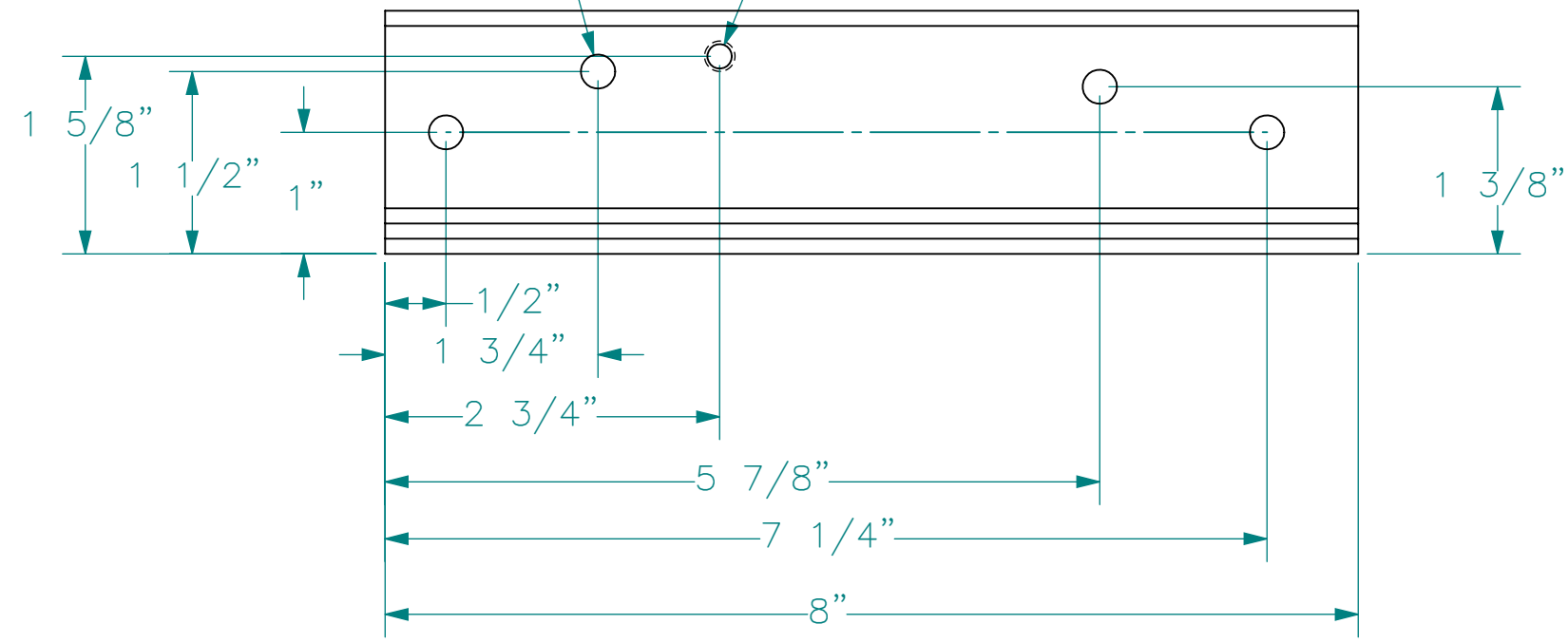
REVISIONS			
REV.	DESCRIPTION	DATE	APPROVED
-	INITIAL RELEASE	01-01-15	CJD



2X ϕ 5/16" THRU ALL



4X ϕ 5/16" THRU ALL
 ϕ 3/16" THRU ALL
 1/4-20 UNC THRU ALL

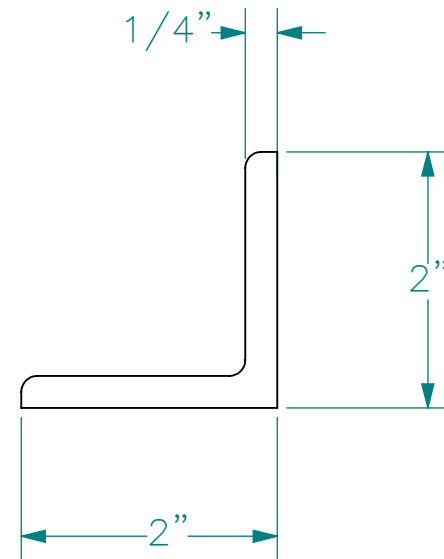
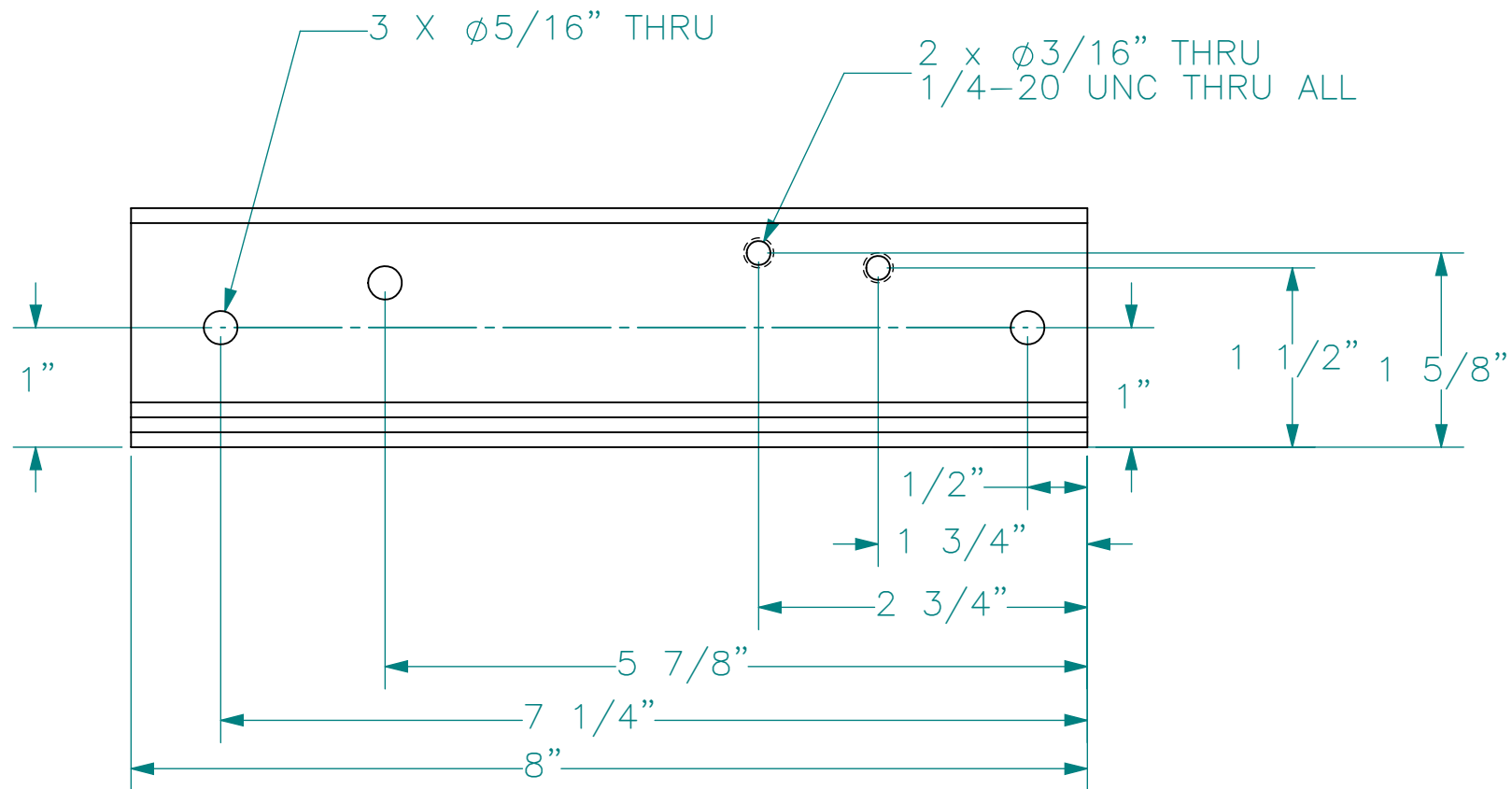
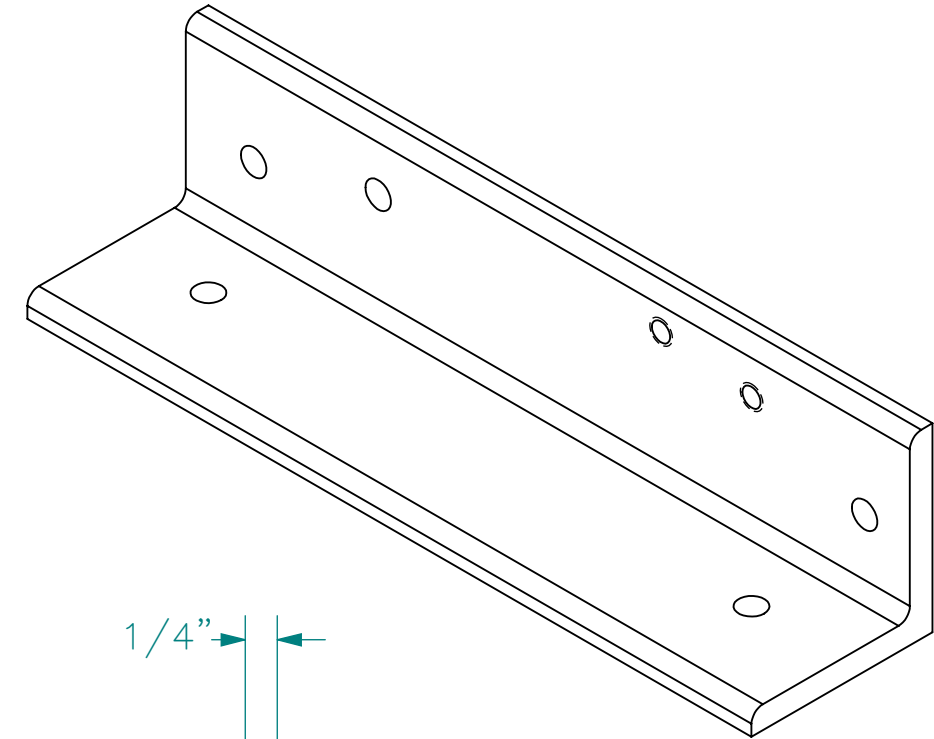
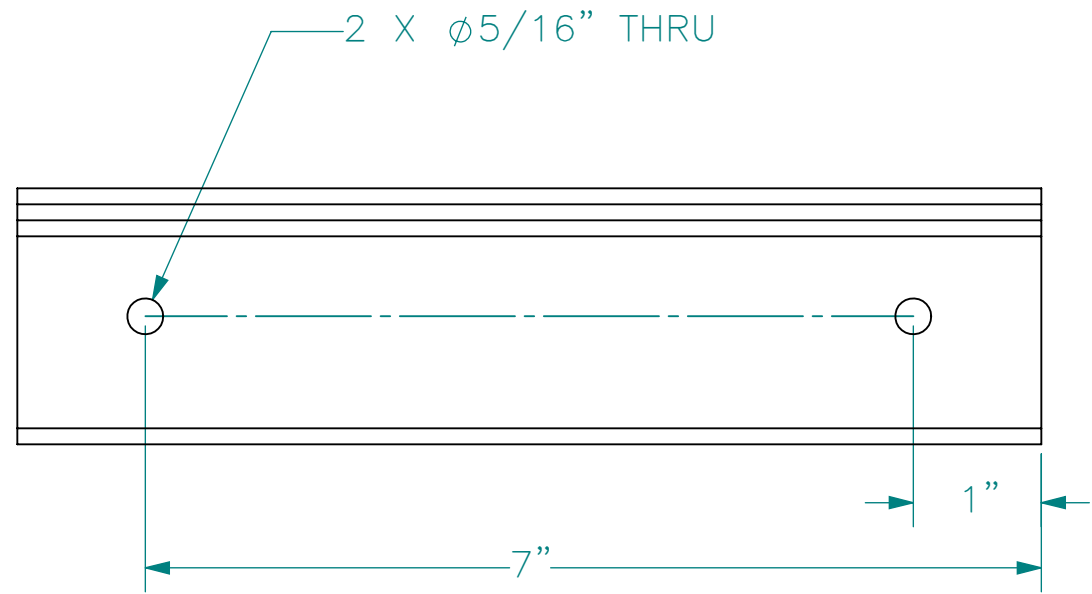


NOTES:
 ALL DIMENSIONS APPLY AFTER ANY COATING

UNLESS SPECIFIED OTHERWISE DIMENSIONS ARE IN INCHES AND TOLERANCES ARE:		CAD GENERATED DRAWING, DO NOT MANUALLY UPDATE		TITLE	
FRACTIONS DECIMALS ANGLES ± 1/16 .XX±.01 ±1/2 deg .XXX±.005		APPROVALS DATE		BASE ANGLE 1	
MATERIAL 6061-T6 (SS)		DRAWN CJD	01-01-15	SIZE B	DOCUMENT NUMBER Base Angle 1
FINISH AS FABRICATED		CHECKED		SCALE: 2:3	REV -
WEIGHT .719 LBS		APPROVED		CAGE CODE: ORAP1	SHEET 1 OF 1

CJD

REVISIONS			
REV.	DESCRIPTION	DATE	APPROVED
-	INITIAL RELEASE	01-01-15	CJD

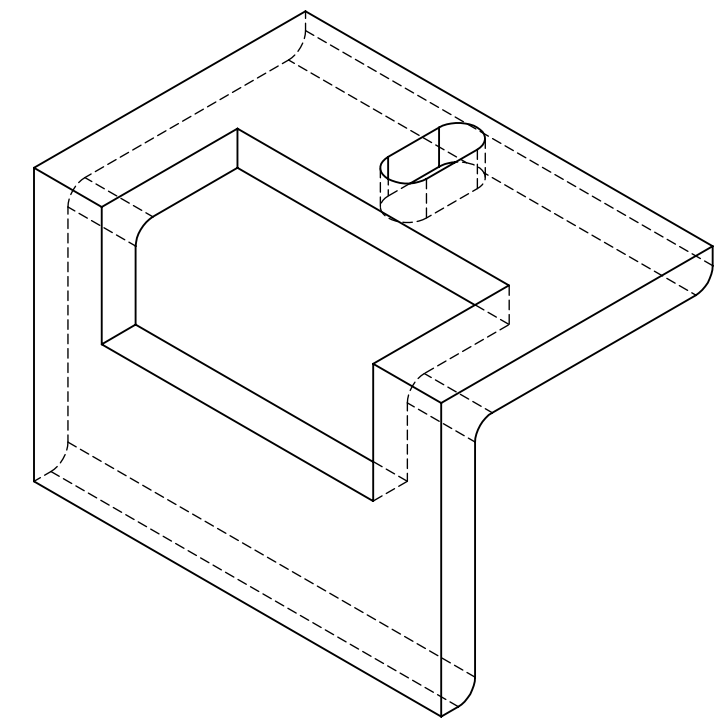
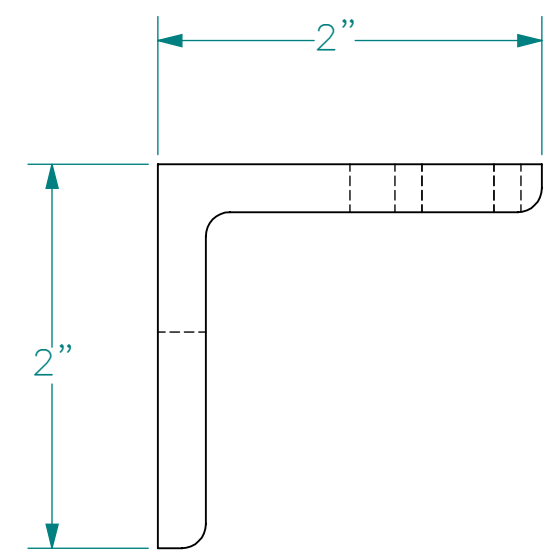
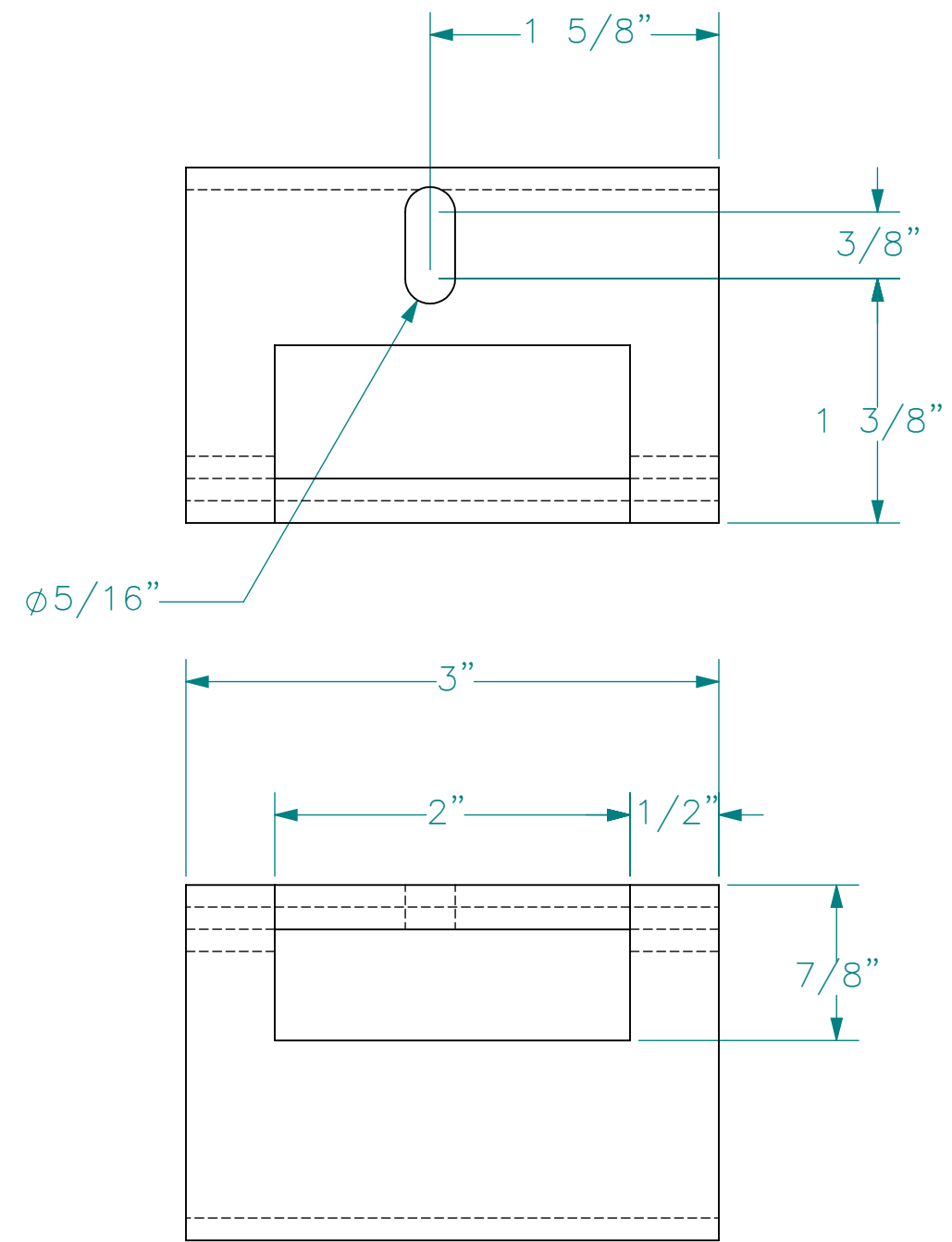


NOTES:
ALL DIMENSIONS APPLY AFTER ANY COATING

UNLESS SPECIFIED OTHERWISE DIMENSIONS ARE IN INCHES AND TOLERANCES ARE:		CAD GENERATED DRAWING, DO NOT MANUALLY UPDATE		TITLE	
FRACTIONS DECIMALS ANGLES ± 1/16 .XX±.01 ±1/2 deg .XXX±.005		APPROVALS DATE		BASE ANGLE 2	
MATERIAL 6061-T6 (SS)		DRAWN CJD	01-01-15	SIZE B	DOCUMENT NUMBER Base Angle 2
FINISH AS MACHINED		CHECKED		SCALE: 2:3	REV -
WEIGHT .719 LBS		CAGE CODE: ORAP1		SHEET 1 OF 1	

CJD

REVISIONS			
REV.	DESCRIPTION	DATE	APPROVED
-	INITIAL RELEASE	01-01-15	CJD

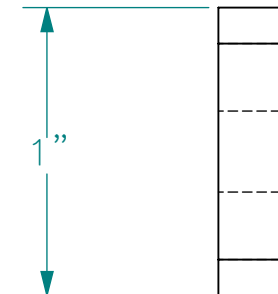
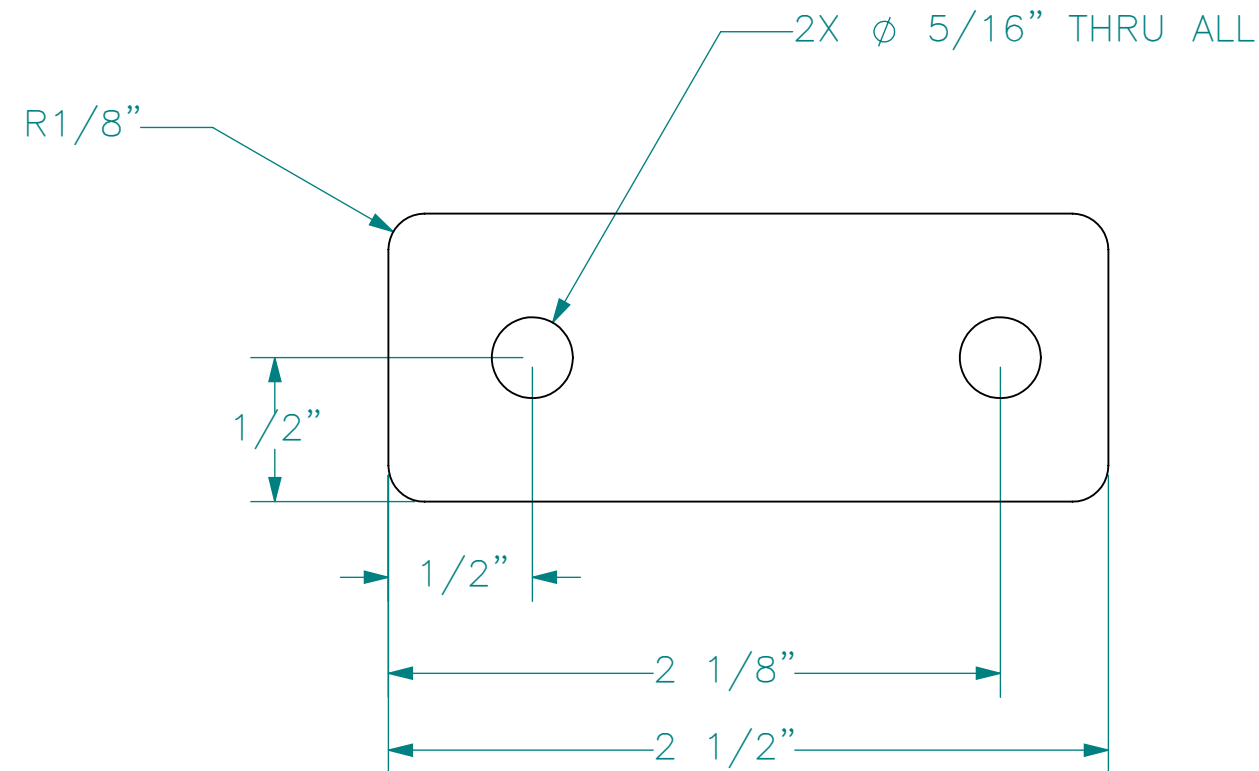
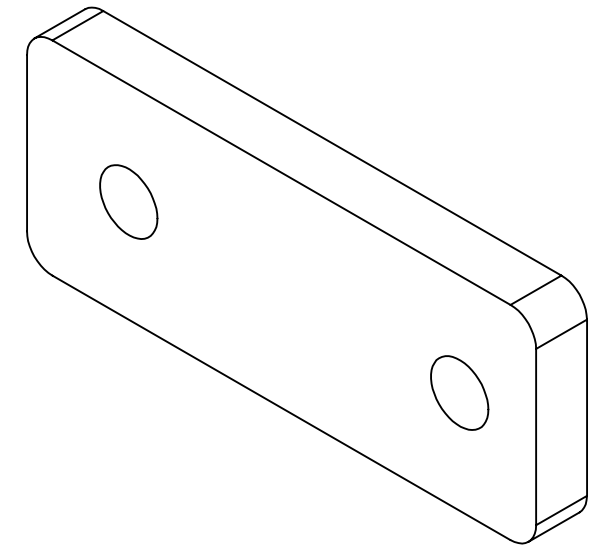
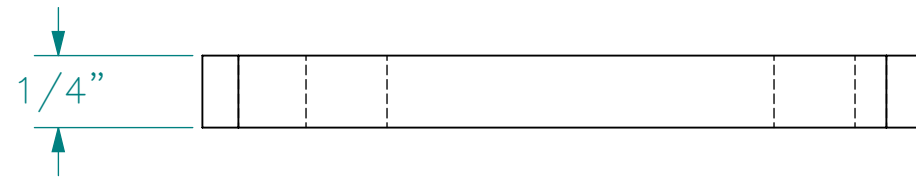


NOTES:
ALL DIMENSIONS APPLY AFTER ANY COATING

UNLESS SPECIFIED OTHERWISE DIMENSIONS ARE IN INCHES AND TOLERANCES ARE:		CAD GENERATED DRAWING, DO NOT MANUALLY UPDATE		TITLE	
FRACTIONS DECIMALS ANGLES ± 1/16 .XX±.01 ±1/2 deg .XXX±.005		APPROVALS DATE		PLATEN	
MATERIAL 6061-T6 (SS)		DRAWN CJD	01-01-15	SIZE B	DOCUMENT NUMBER Platen
FINISH AS FABRICATED		CHECKED		SCALE: 1:1	REV -
WEIGHT .189 LBS		CAGE CODE: ORAP1		SHEET 1 OF 1	

CJD

REVISIONS			
REV.	DESCRIPTION	DATE	APPROVED
-	INITIAL RELEASE	01-01-15	CJD

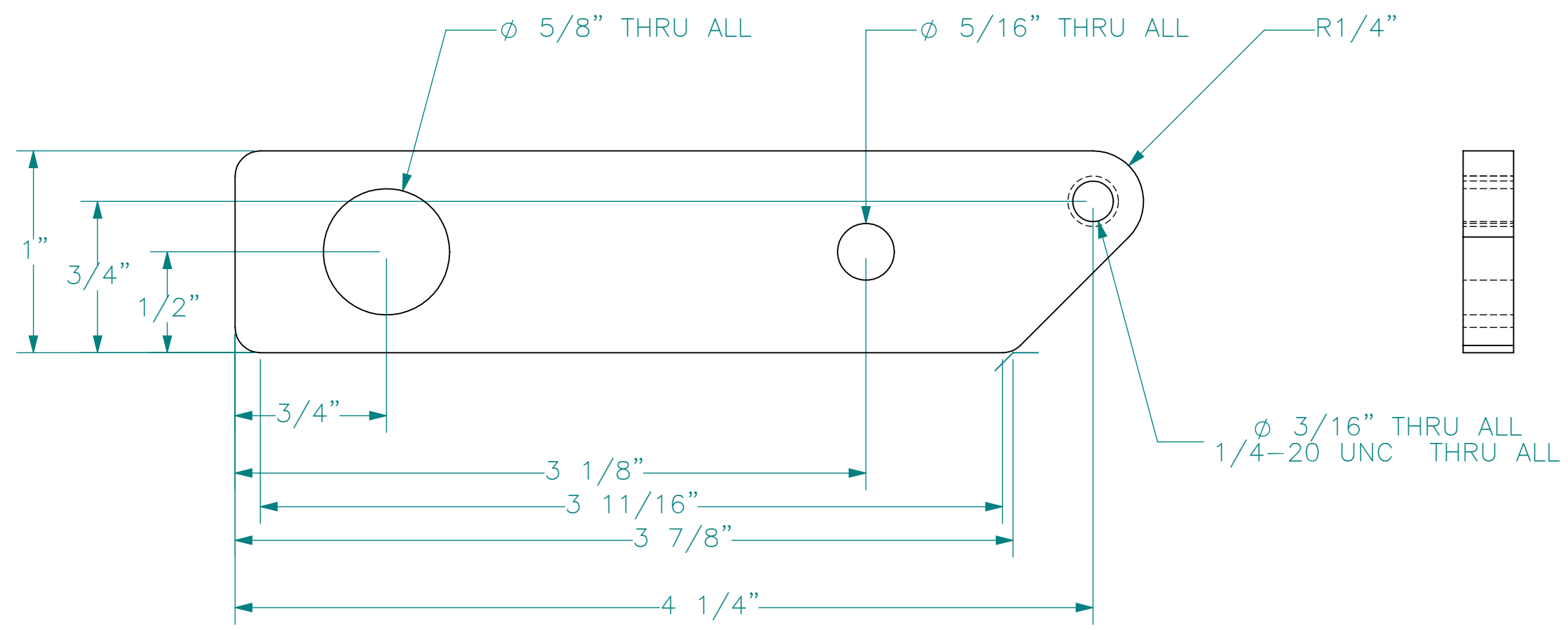
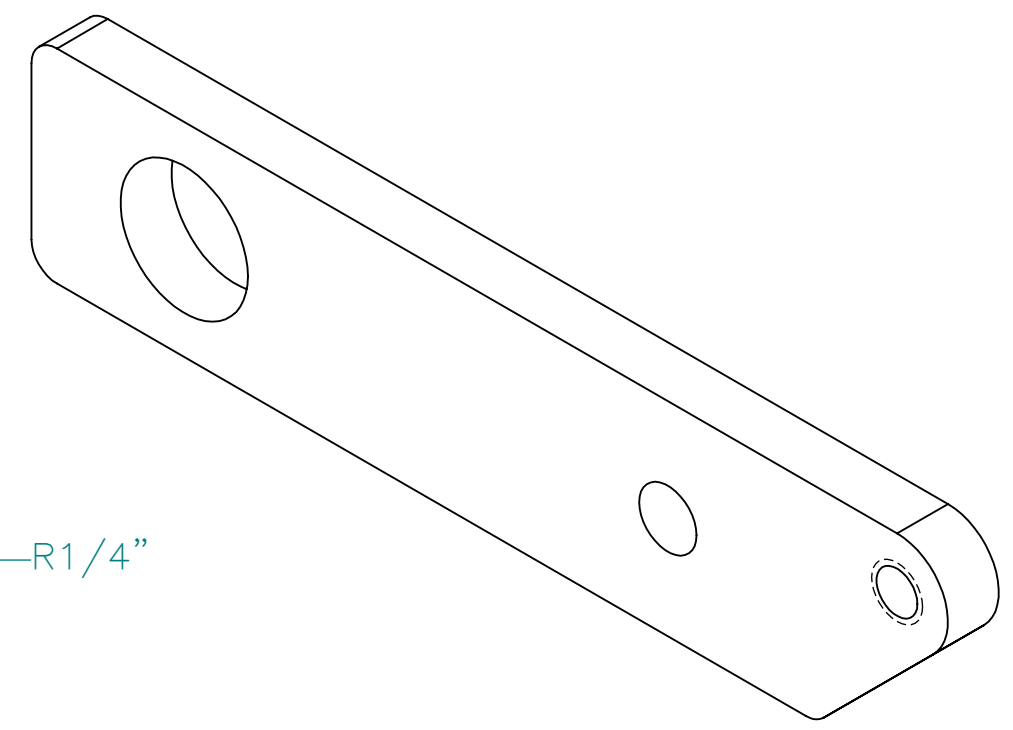
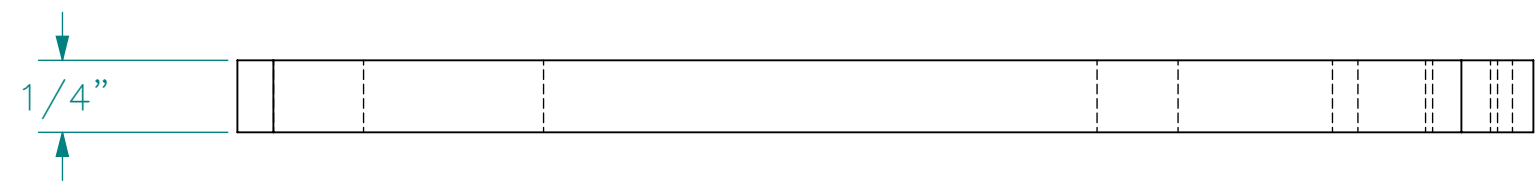


NOTES:
ALL DIMENSIONS APPLY AFTER ANY COATING

UNLESS SPECIFIED OTHERWISE DIMENSIONS ARE IN INCHES AND TOLERANCES ARE:		CAD GENERATED DRAWING, DO NOT MANUALLY UPDATE		TITLE	
FRACTIONS DECIMALS ANGLES $\pm 1/16$.XX \pm .01 $\pm 1/2$ deg .XXX \pm .005		APPROVALS DATE		PLATEN RISER	
MATERIAL 6061-T6 (SS)		DRAWN CJD	01-01-15	SIZE B	DOCUMENT NUMBER Platen Riser
FINISH AS FABRICATED		CHECKED		SCALE: 3:2	REV -
WEIGHT .058 LBS		APPROVED		CAGE CODE: ORAP1	SHEET 1 OF 1

CJD

REVISIONS			
REV.	DESCRIPTION	DATE	APPROVED
-	INITIAL RELEASE	01-01-15	CJD

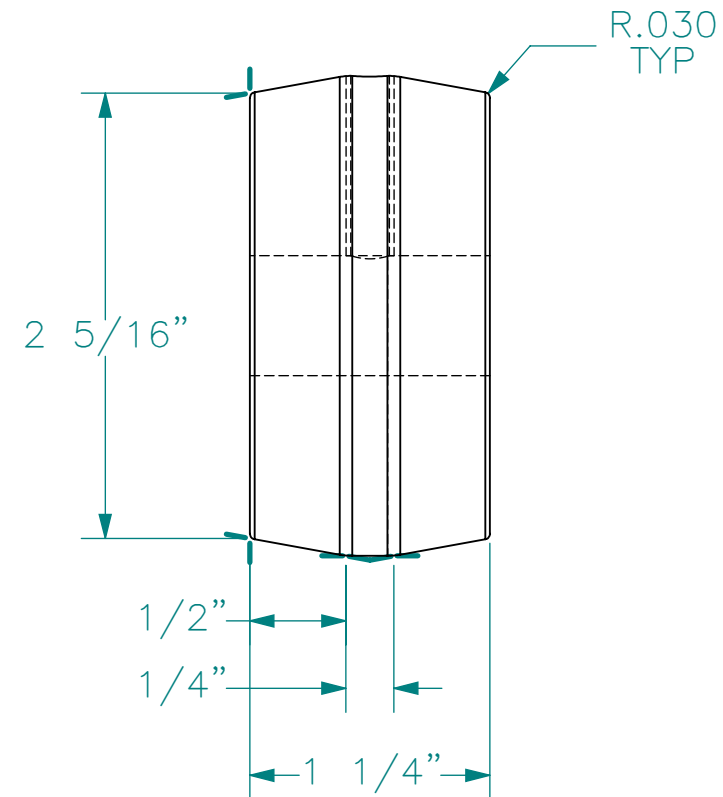
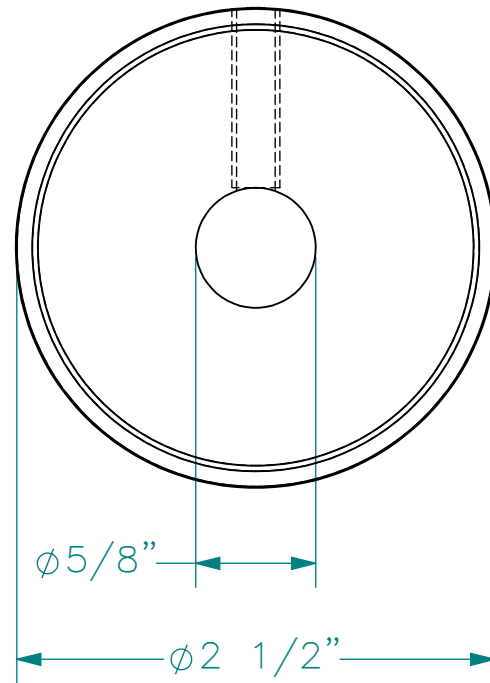
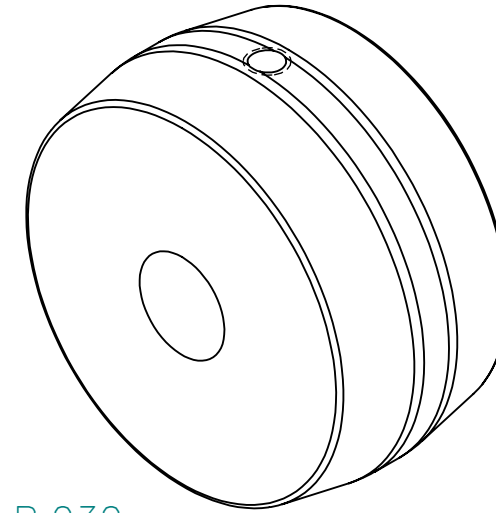
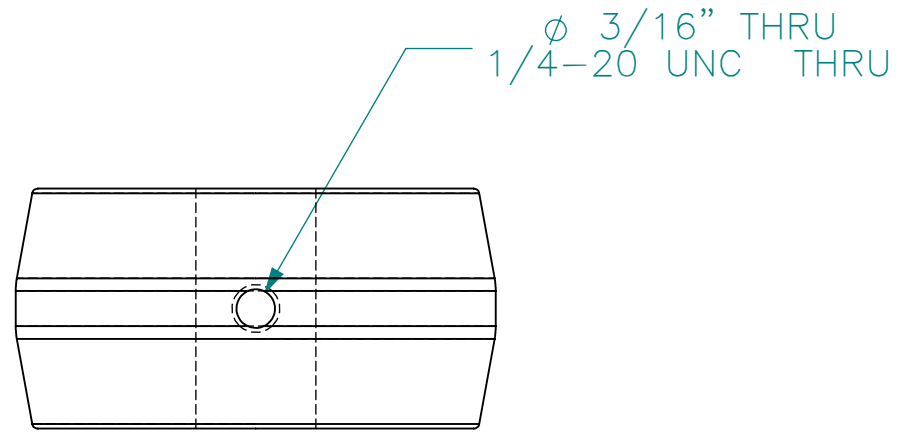


NOTES:
ALL DIMENSIONS APPLY AFTER ANY COATING

UNLESS SPECIFIED OTHERWISE DIMENSIONS ARE IN INCHES AND TOLERANCES ARE:		CAD GENERATED DRAWING, DO NOT MANUALLY UPDATE		TITLE	
FRACTIONS DECIMALS ANGLES ± 1/16 .XX±.01 ±1/2 deg .XXX±.005		APPROVALS DATE		PIVOT ARM	
MATERIAL 6061-T6 (SS)		DRAWN CJD	01-01-15	SIZE B	DOCUMENT NUMBER Pivot Arm
FINISH AS FABRICATED		CHECKED		REV -	
WEIGHT .094 LBS		APPROVED		CAGE CODE: ORAP1	SCALE: 3:2
				SHEET 1 OF 1	

CJD

REVISIONS			
REV.	DESCRIPTION	DATE	APPROVED
-	INITIAL RELEASE	01-01-15	CJD



NOTES:
ALL DIMENSIONS APPLY AFTER ANY COATING

UNLESS SPECIFIED OTHERWISE DIMENSIONS ARE IN INCHES AND TOLERANCES ARE:		CAD GENERATED DRAWING, DO NOT MANUALLY UPDATE		TITLE	
FRACTIONS DECIMALS ANGLES ± 1/16 .XX±.01 ±1/2 deg .XXX±.005		APPROVALS DATE		DRIVE WHEEL	
MATERIAL OAK		DRAWN CJD	01-01-15		SIZE B
FINISH AS FABRICATED		CHECKED			
WEIGHT .109 LBS		APPROVED			DOCUMENT NUMBER Drive Wheel
		CAGE CODE: ORAP1	SCALE: 1:1		REV -
				SHEET 1 OF 1	

CJD